

**CH204,CH408,HYB8  
CS416,SLB16  
(iPECS eMG80HW-TRA-01-003)**

**11 Nov, 2013**

# REVISION HISTORY

ISSUE	DATE	DESCRIPTION OF CHANGES
0.1	17-June-13	Preliminary release
0.2	11-July-13	For domestic training
1.0	11-Nov-13	For Overseas training

Copyright© 2013 Ericsson-LG Enterprise Co. Ltd. All Rights Reserved

This material is copyrighted by Ericsson-LG Enterprise Co. Ltd. Any unauthorized reproductions, use or disclosure of this material, or any part there of, is strictly prohibited and is a violation of Copyright Laws. Ericsson-LG Enterprise reserves the right to make changes in specifications at any time without notice. The information furnished by Ericsson-LG in this material is believed to be accurate and reliable, but is not warranted to be true in all cases.

Ericsson-LG and iPECS are trademarks of Ericsson-LG Enterprise Co. Ltd.

# Table of Contents

CH204/CH408/HYB8/CS416/SLB16

- **Option Board Installation**
- **General Description**
- **Block Diagram**
- **PCB Assembly**
- **Connector & Wiring**

# CH204/CH408/HYB8/CS416/SLB16

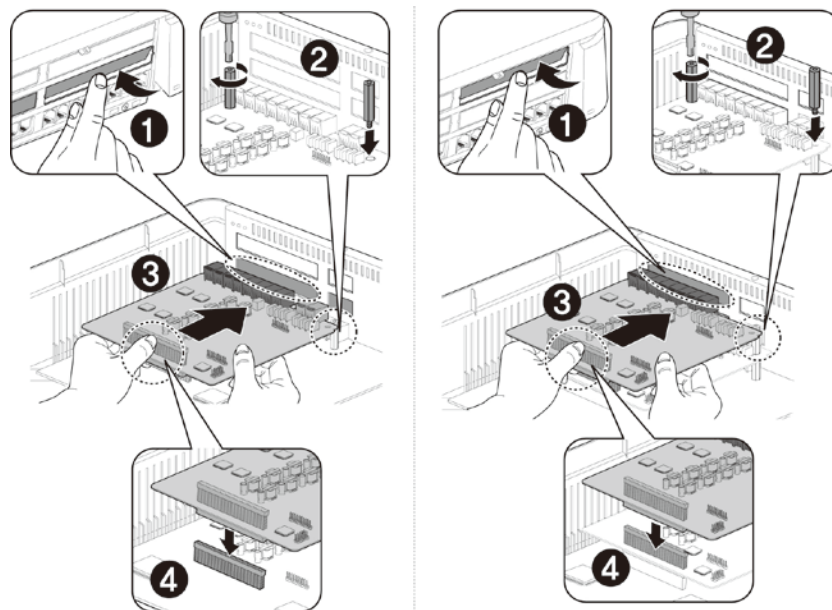
## Option Board Installation

- Installation

1. Remove the cover plate of slot.
2. Before mounting the board, insert 2 deep sockets into MBU with Wrench as shown in #1 of figure.
3. Holding the board as shown in #3, carefully insert the board in the direction of the arrow and then insert the connector into MBU's connector.
4. Last, check if the board securely engages with the connector on MBU.
5. Finally, attach the face plate label enveloped in Option board.

### CAUTION

✓ Firstly Check if AC Power is turned OFF before the installation of board.



# CH204/CH408/HYB8/CS416/SLB16

## General Description – SLT/DKT interface

### - SLT interface

- SLT Feed characteristic : Constant current (20mA) and Constant voltage (-48V)
- Over-voltage and Over current Protection
- Over temperature (SLIC temperature 165°C) Detection and automatically port disable.
- Sinusoidal Ringing Circuit - Frequency : 25Hz, Amplitude : 65Vrms(STG)
- DTMF Dial Detect for each channel - Detect the 16 standard DTMF tone pairs.
- Pulse Dial Detect
- Caller ID support - Generate CID signal according to FSK modulation.
- Message wait Indication support : To inform the missed call  
Line voltage reaches 95V and then a lamp at MWI subscriber phone is blink.
- Line Monitoring function

Methods to check for common faults on line. For example Short Circuit, Line disconnect, etc

### - DKT interface

- Feeding power : +30V
- 2 Wire connection
- Terminal Distance
  - 330 m (1000 ft) of AWG #24 cable
  - 500 m (1600 ft) of AWG #22 cable

# CH204/CH408/HYB8/CS416/SLB16

## General Description – ACO Interface

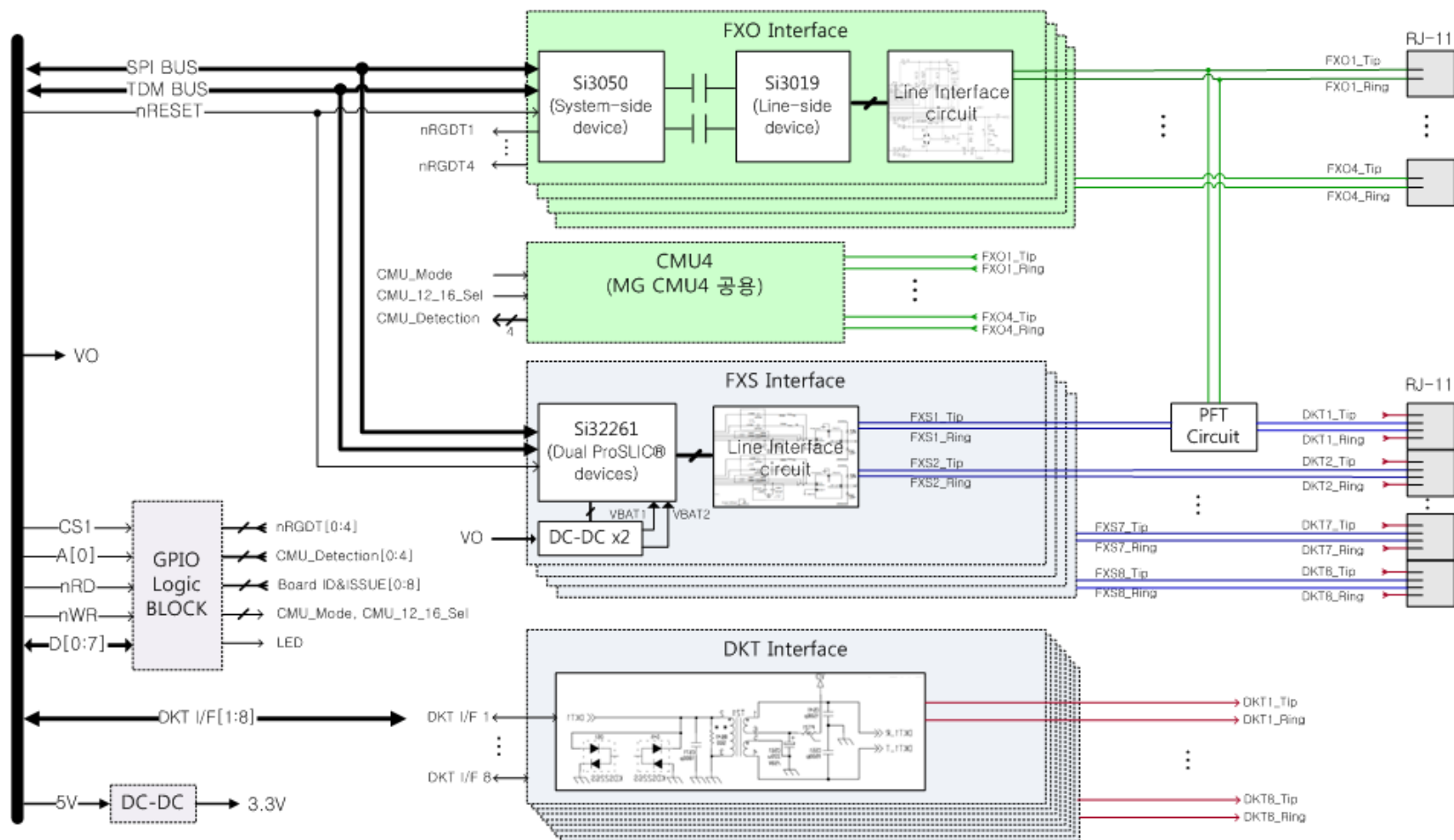
- Loop start CO(PSTN) interface Function
- Caller ID / CPT (call progress tone) / DTMF Detection are supported by MBU ACT2 Device
- Tip/Ring [Polarity Reversal detection by default](#), Pulse dial function are supported
- 1 PFT (Power Failure Transfer) per board support : **CH204/CH408/CS416**  
[CO1 ⇔ the 1'st SLT port(SLT1)]
- Option Board : CMU4 for call metering service (50Hz, 12kHz, 16kHz)
- [Line monitoring](#)
  - User can know the line connection status and loop status after off-hook via Web admin maintenance or RS-232C monitor on MBU

### LED Indications

LED	Color	Description
LD1	Blue	Station port in use status ON – A station port is in use OFF – All station ports are idle

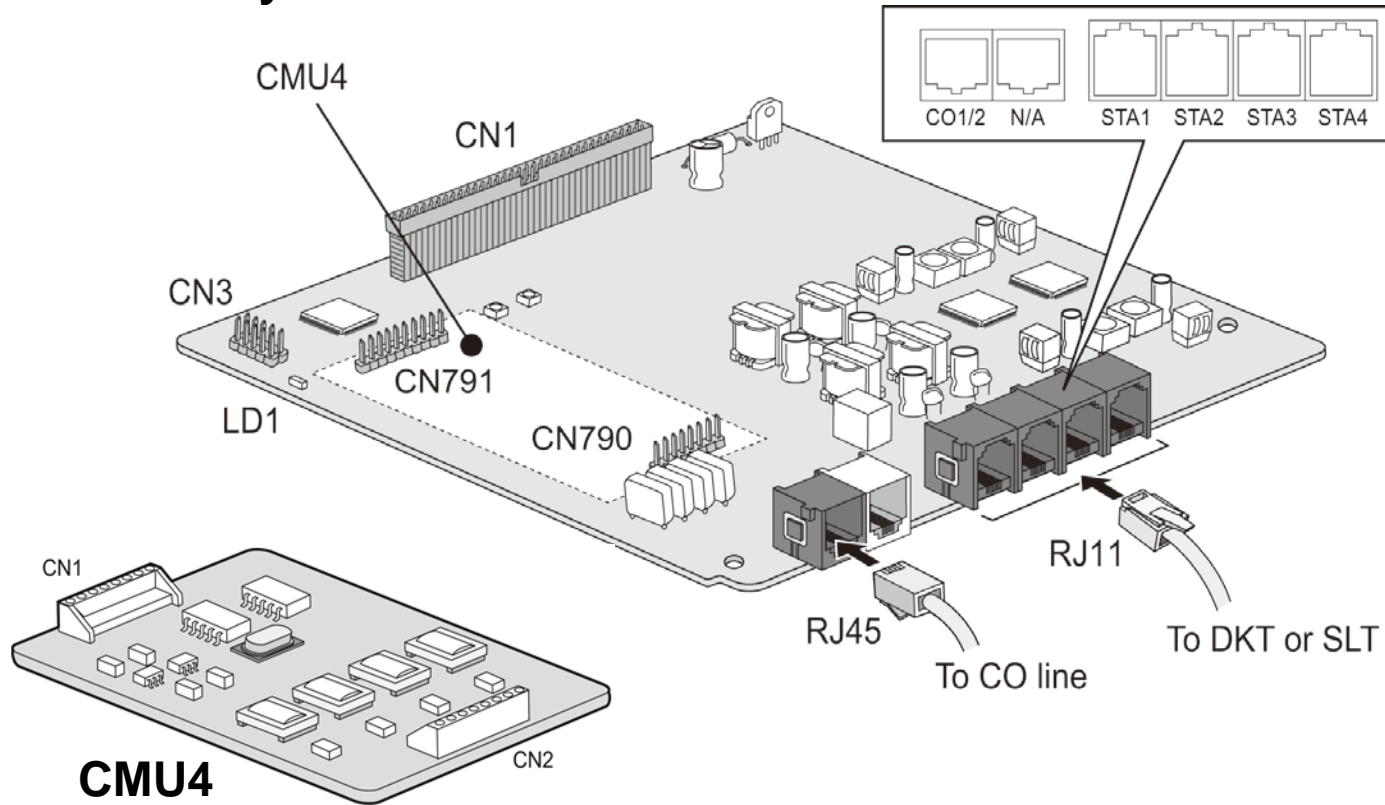
# CH204/CH408

## Block Diagram



# CH204

## PCB Assembly

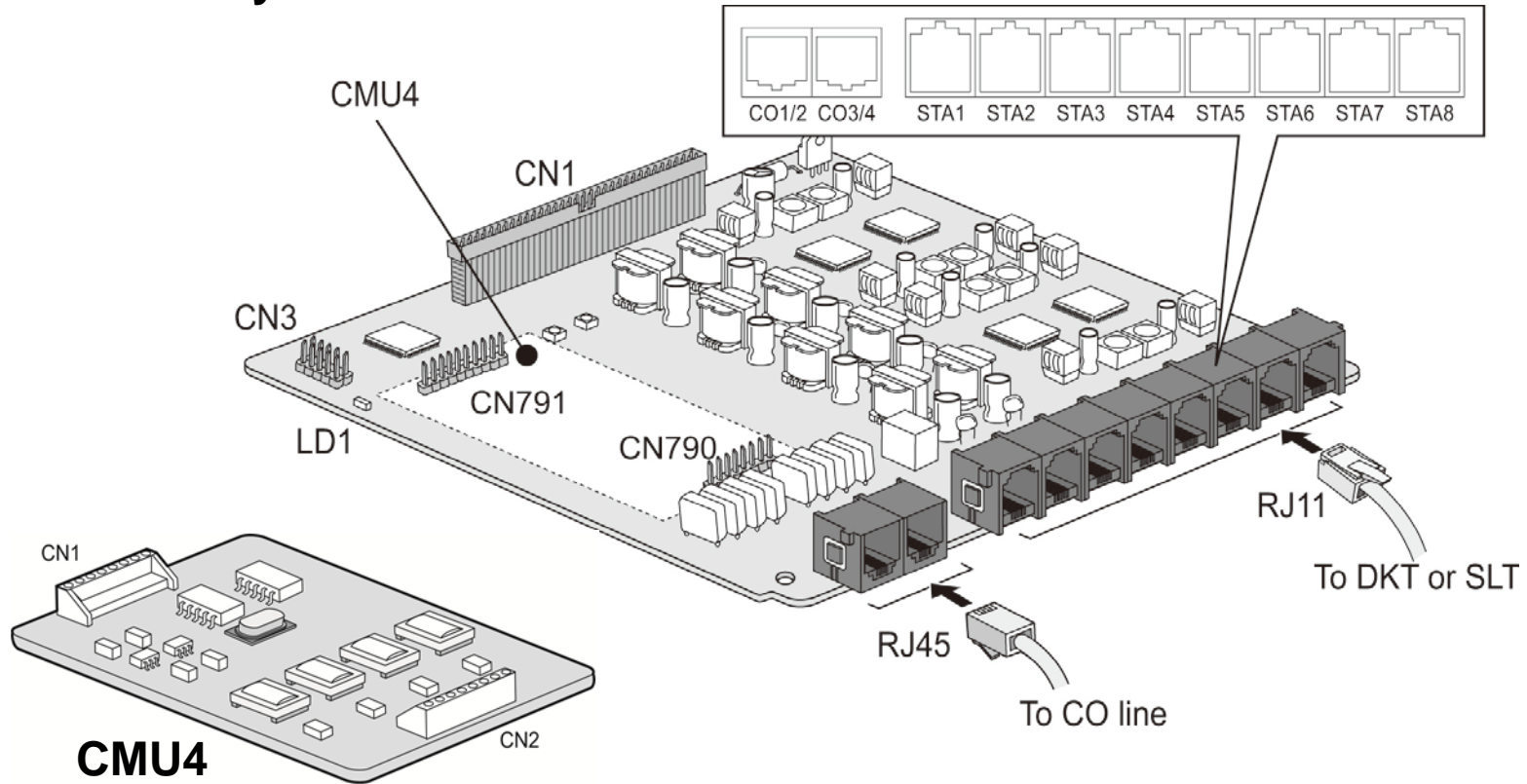


- 2 CO Line & 4 Hybrid Interface Board
- 1 PFT circuit [CO1 ⇔ the 1'st SLT port(SLT1)]



# CH408

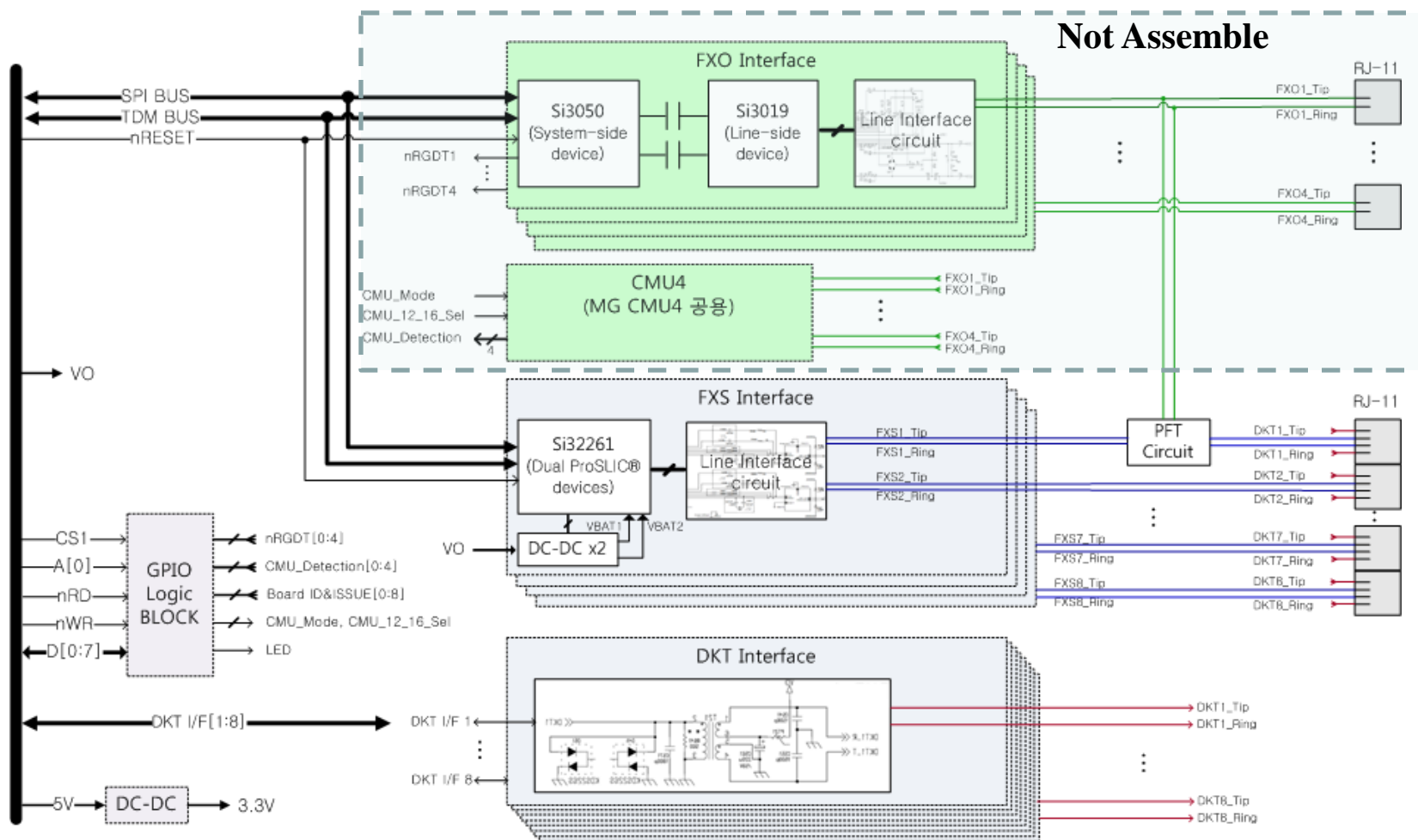
## PCB Assembly



- 4 CO Line & 8 Hybrid Interface Board
- 1 PFT circuit [CO1 ⇔ the 1'st SLT port(SLT1)]

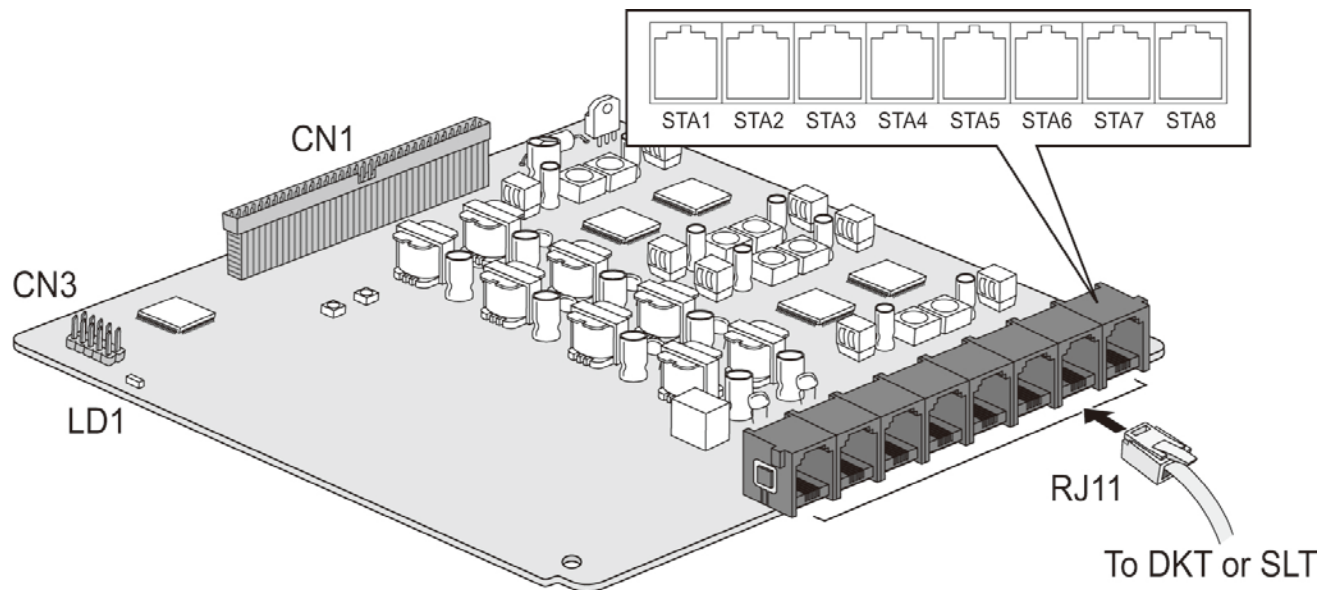
# HYB8

## Block Diagram



# HYB8

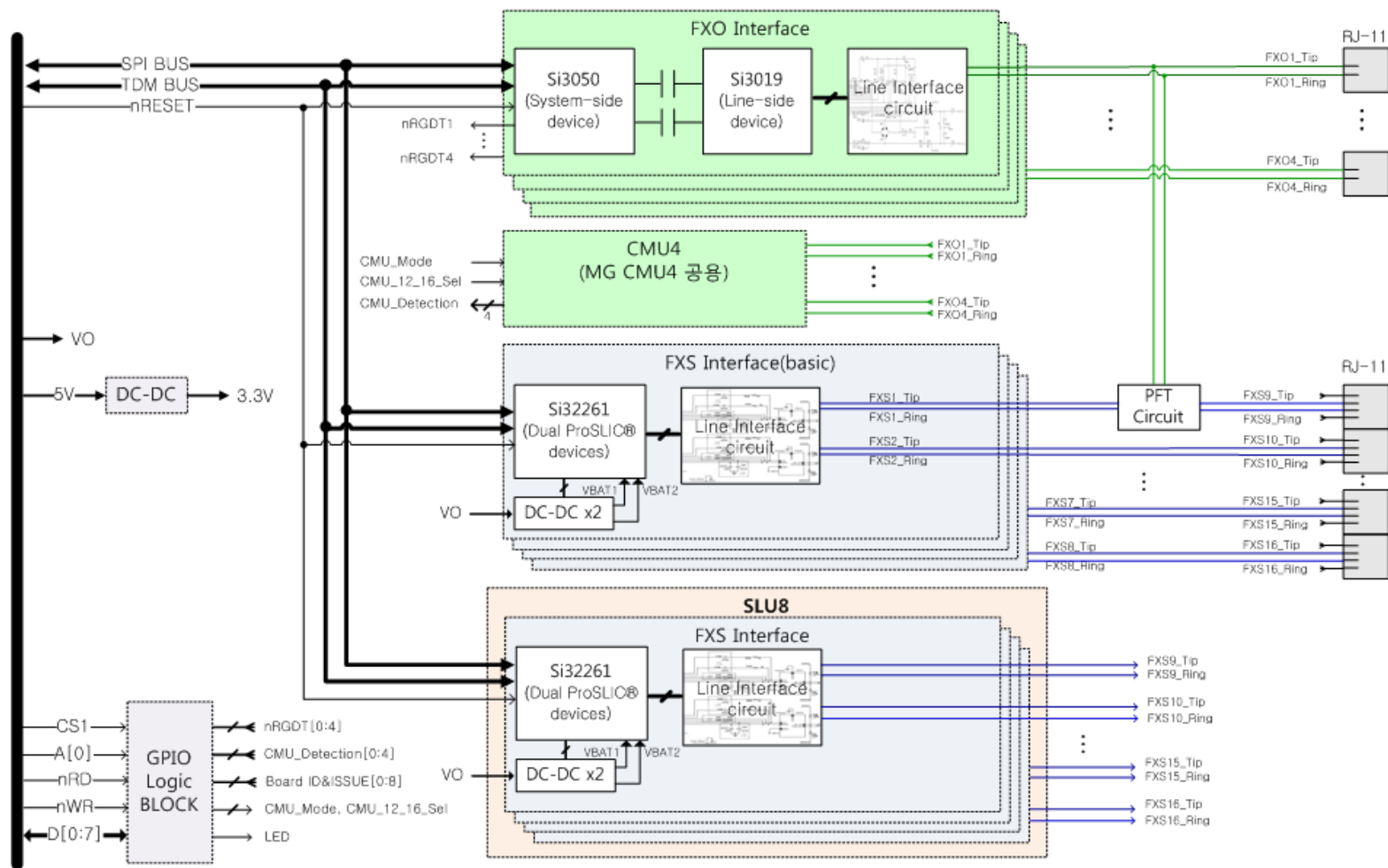
## PCB Assembly



- 8 Hybrid Interface Board

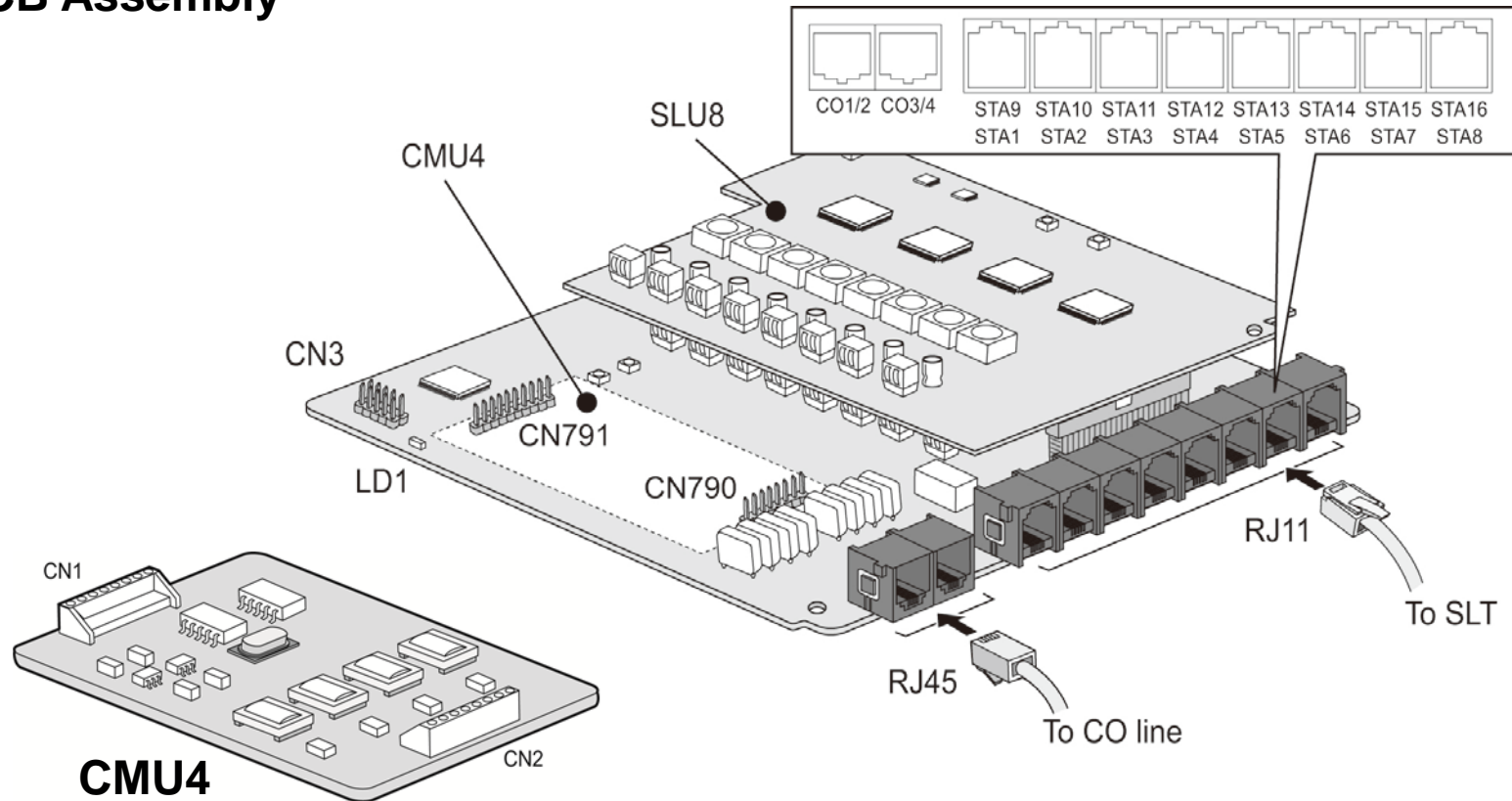
# CS416

## Block Diagram



# CS416

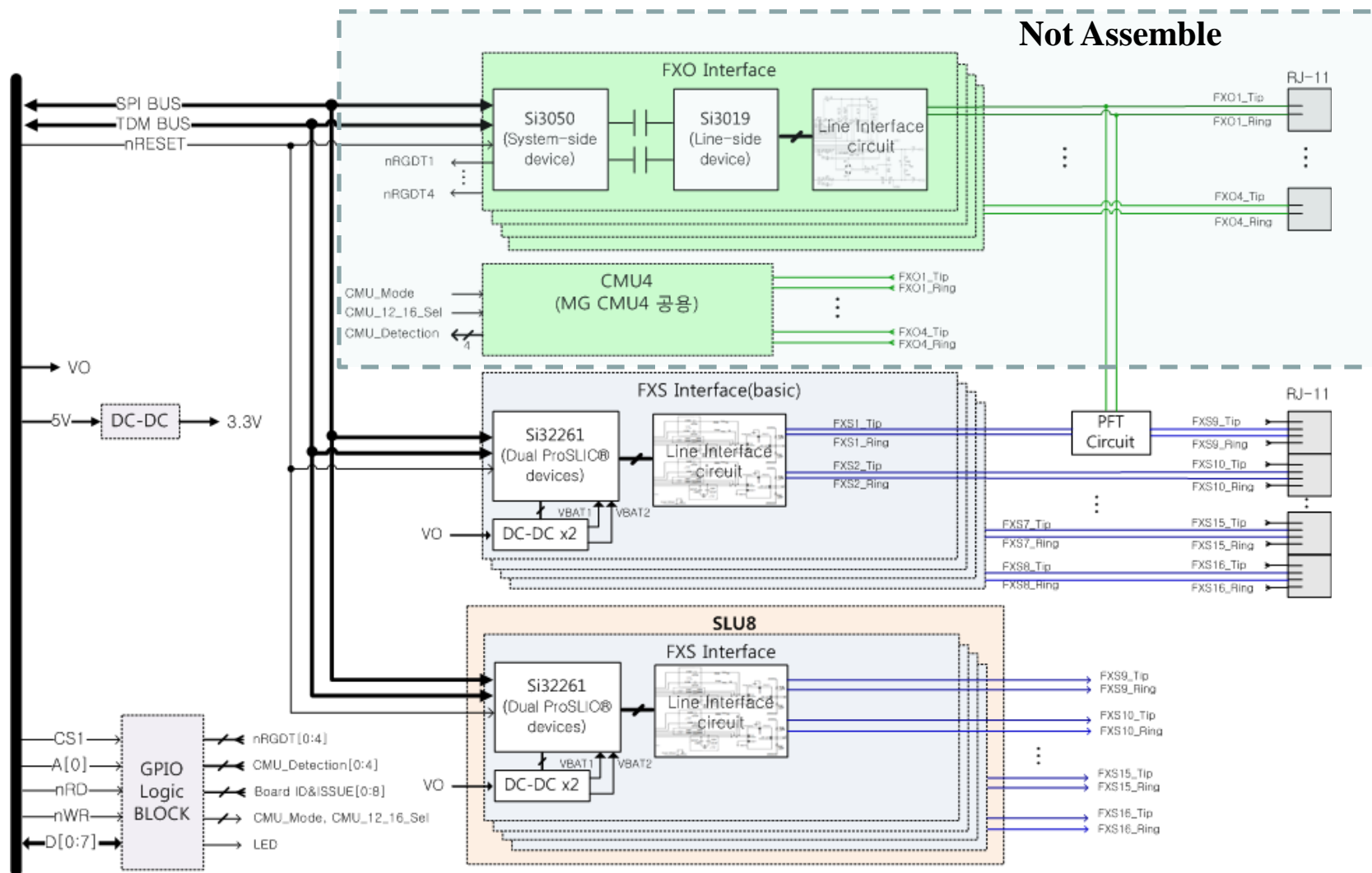
## PCB Assembly



- 4 CO Line & 16 SLT Interface Board including SLU8 by default
- 1 PFT circuit [CO1 ⇔ the 1'st SLT port(SLT1)]
- No connector for the other option board installation on top side

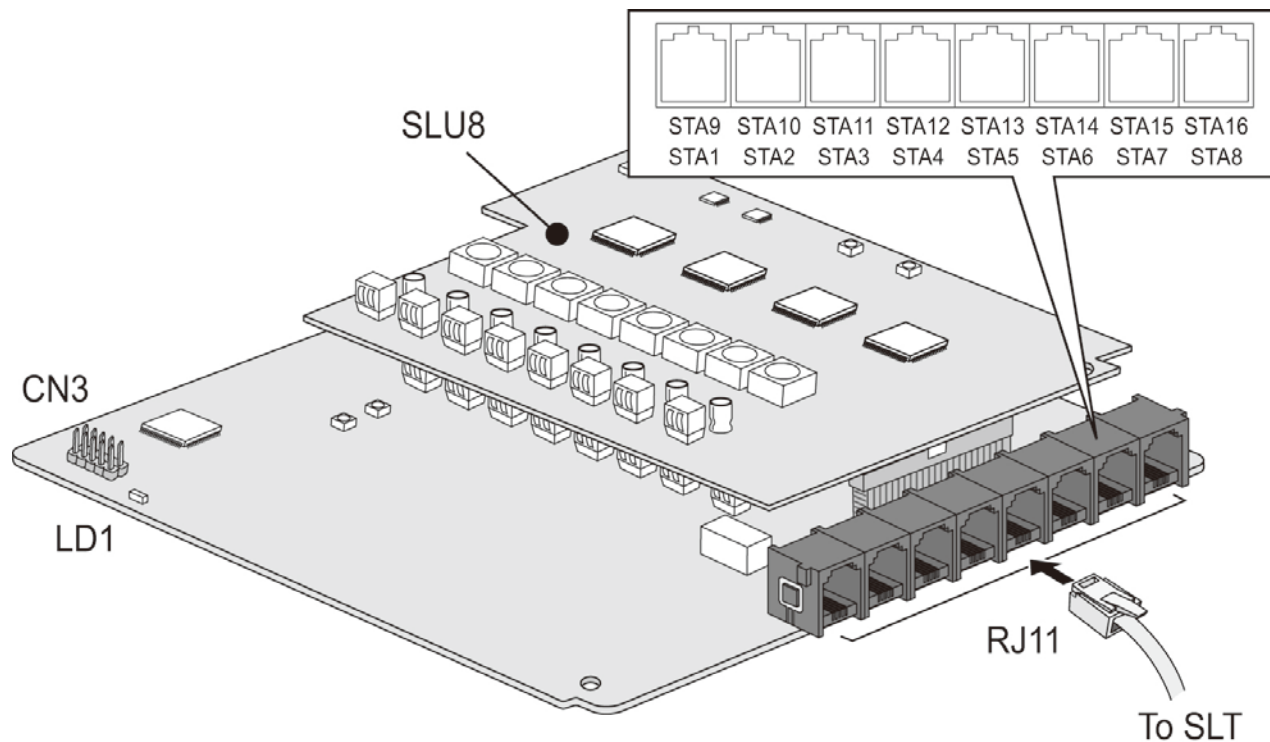
# SLB16

## Block Diagram



# SLB16

## PCB Assembly



- 16 SLT Interface Board including SLU8 by default
- No connector for the other option board installation on top side

**iPECS**

---

Your Communications Solution