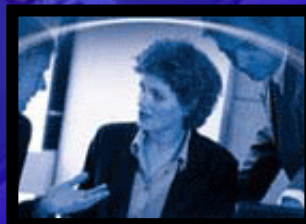


Introduction to

# Samsung CTI

Feb. 2004



# OfficeServ

## ■ Contents

- Samsung CTI Products
- CTI Software Structure
- OfficeServ Link
  - Installation / Configuration
- OfficeServ Call & Plus
  - Preparation / Installation / Launching
- OfficeServ Operator
  - Installation / Launching
- Open TSP
  - Overview / Installation / Configuration / Test
- How to Save Logs



# OfficeServ

## ■ Samsung CTI Products

Product	Main Feature	Driver	Running OS	RLS
OfficeServ Call / Plus	Desktop Call Control / Caller Information Provider	SCTSP32	Win98/NT/2000/XP	V5.1.1
OfficeServ Operator	PC based Attendant Console	SCTSP32	Win98/NT/2000/XP	V1.2
OfficeServ News	Web Based News Server	X	Win98/NT/2000/XP	V2.3
EasySet	Web Based Phone Manager	X	Win 2000 / XP	V2.04
OfficeServ ACD	Internet Call Center Solution	SCTSP32	Server : Win 2000 Client : Win 98/2000/XP	V1.0
OfficeServ SoftPhone	Desktop IP Phone	X	Win NT/2000/XP	V1.0 (*04.03)
OpenTSP	TAPI Based Telephony Service Provider	-	Win 95/98/NT/2000/XP	V3.1
OfficeServ Link	K/P CTI MSG Distributor	X	Win98/NT/2000/XP	V2.1

# OfficeServ

## OfficeServ Call, News



- **OfficeServ Call** : desktop call control, displays caller information on LCD screen and user's PC
- **OfficeServ News** : delivers useful information(Internet & internal) to all users through the LCD screen of phone

# OfficeServ

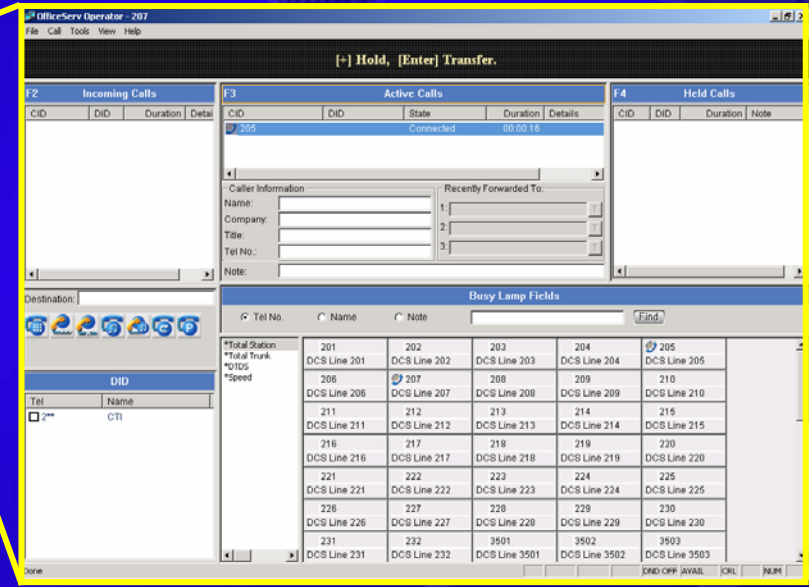
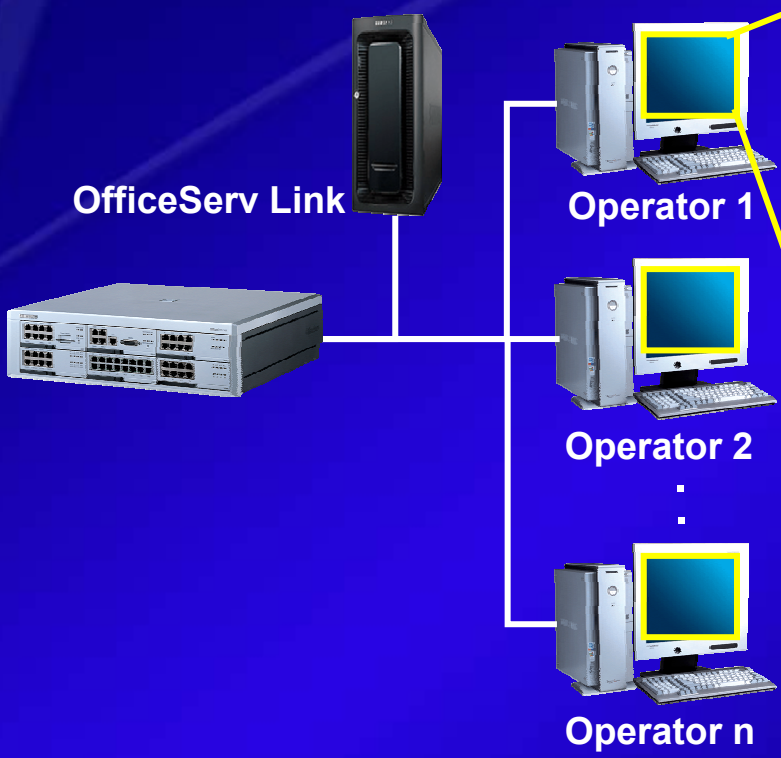
## OfficeServ EasySet



- Personal phone manager : easy to establish personal phone(IP Phone & Digital Phone) functions through Web
- Convenient short message service and executive status wallboard

# OfficeServ

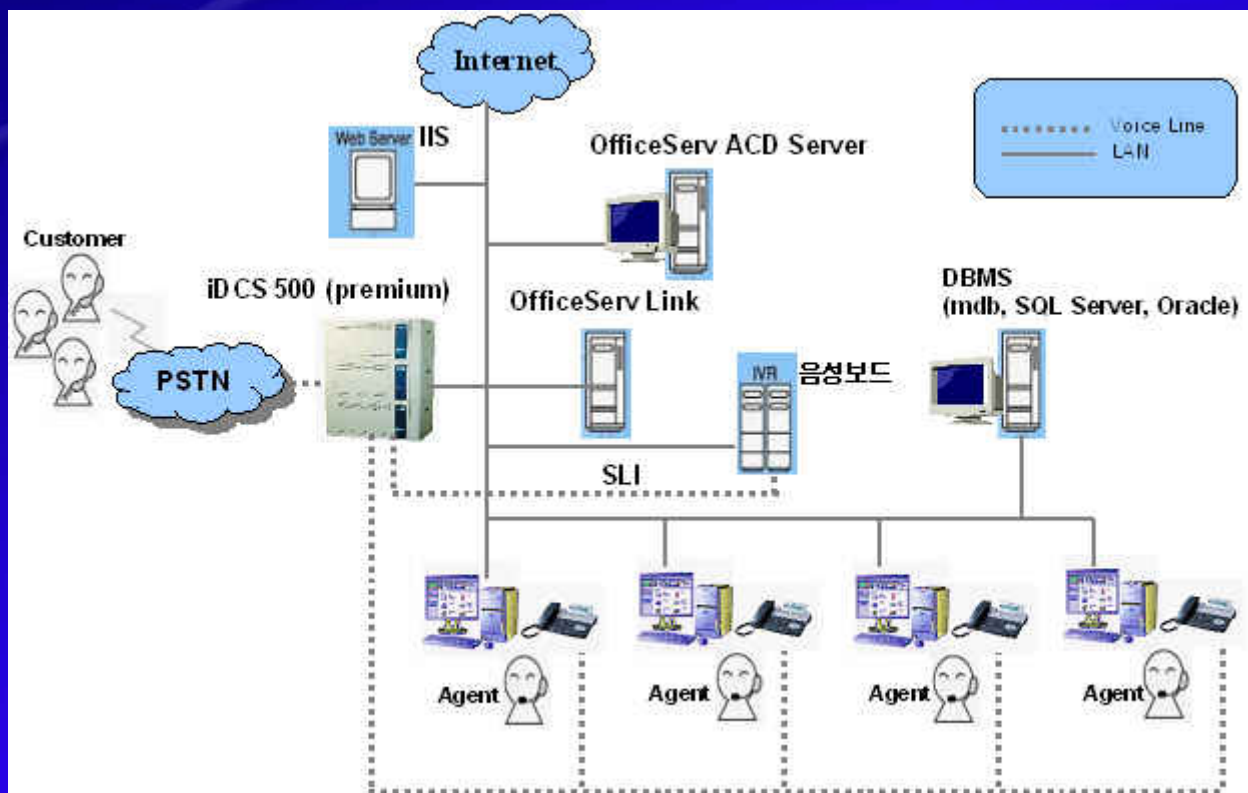
## OfficeServ Operator



- PC-based attendant console
- Convenient keyboard operation, simplicity of configuration

# OfficeServ

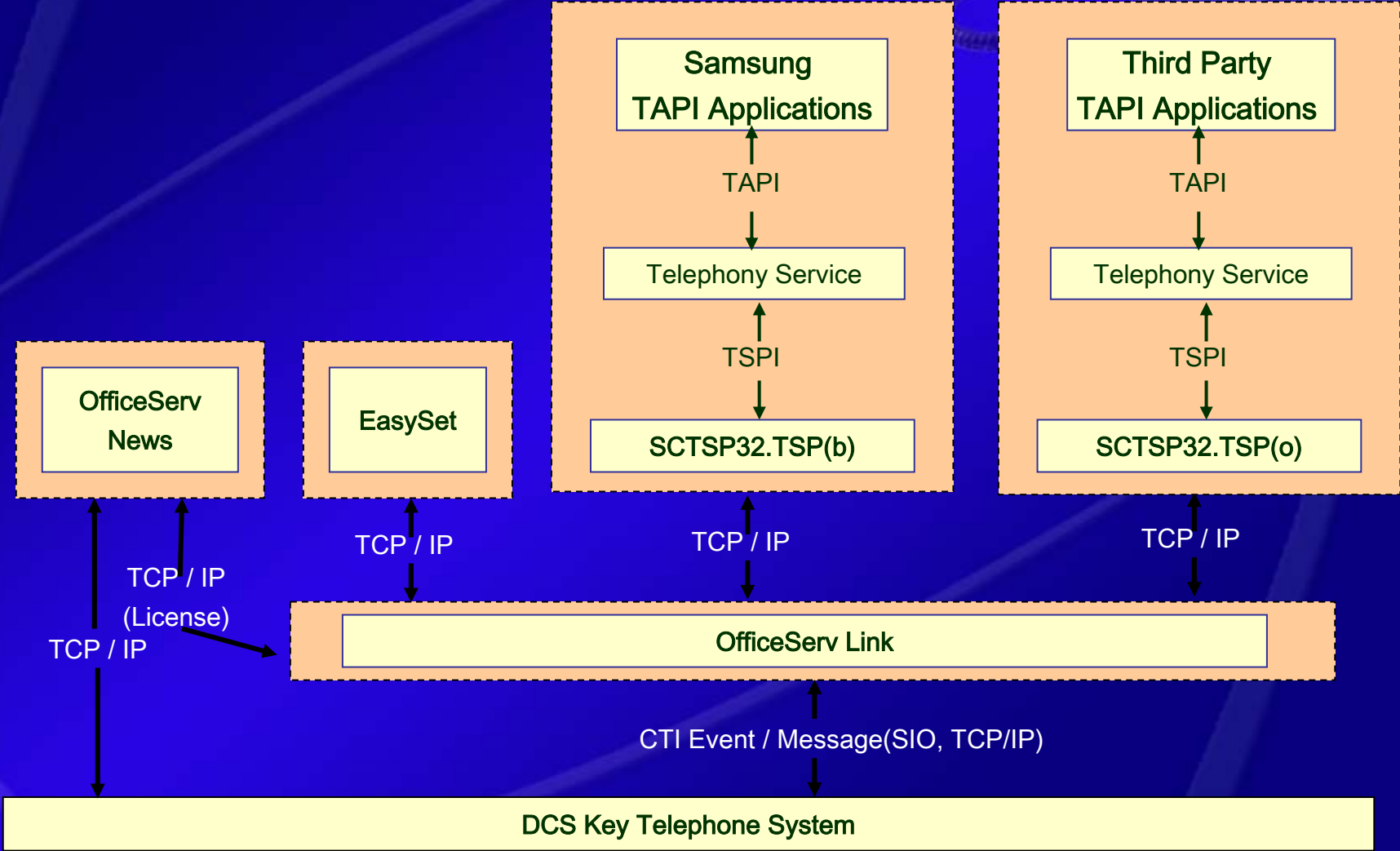
## OfficeServ ACD



- Services both PSTN Calls & Internet Requests  
(VOIP, Text Chat, E-mail, Web Callback, Web Collaboration)
- Real-time Monitoring, Statistics, Campaign Services, IVR Components

# OfficeServ

■ Software Structure

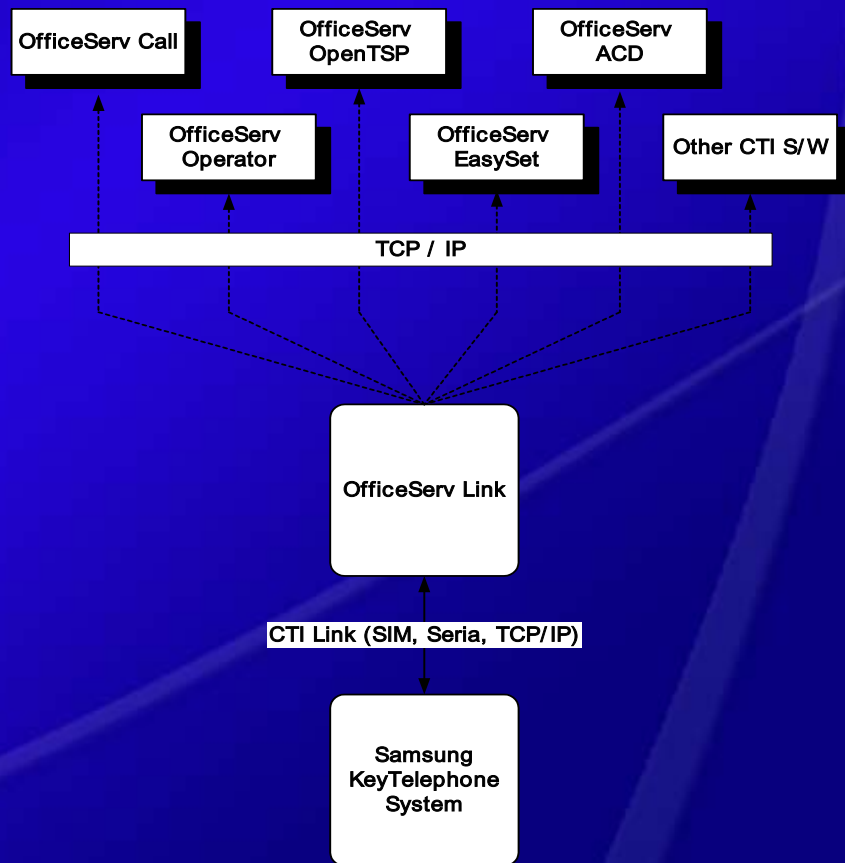




# OfficeServ

## OfficeServ Link as a CTI Message I/O Server

- Works as a CTI message server for most of Samsung CTI applications.
- Before executing each CTI application, the OfficeServ Link should be running.



# OfficeServ

## ■ OfficeServ Link as a License Server

- Each Samsung CTI application is protected by a license key (based on specific MAC addresses)
- Before using each application, you should install a valid license key on your OfficeServ Link
- Each application asks to OfficeServ Link if there's available license while initializing
- If there's no valid license, the application will be terminated



# OfficeServ

## ■ What is TSP?



### Telephony Service Provider

- One of TAPI Components
- A Middleware between TAPI Compatible Applications and a Real Switch.
- All Telephony Service Providers execute in the TAPISRV Process (Telephony Service)
- Implements Detailed Telephony Device Controls

# OfficeServ



## ■ Purpose of TSP (by Microsoft)

- A telephony service provider (TSP) is a dynamic-link library (DLL) that supports communications device control through a set of exported service functions. A TAPI application uses standardized commands, TAPI passes information to the telephony service provider, and the TSP handles the specific commands that must be exchanged with the device.
- A TSP must conform to the Telephony Service Provider Interface (TSPI) to function as a service provider within the Microsoft Telephony environment. TSPI defines the external functions exposed by a telephony service provider supplied with communications equipment.

# OfficeServ



## ■ OpenTSP Specification

- TAPI 2.x / TAPI 3.x Compatible
- Only Supports Line\_XXXX Functions
- Supports All Windows OS Systems
  - Win98, Me, NT, 2000, XP, 2003 or later
- All TAPI Compatible Application Venders can use Samsung OpenTSP for their own purpose.
  - Samsung CTI Solutions (Call, Operator, ACD etc)
  - TAPI Compatible PIMs
  - 3rd Party Vender's CTI Solutions

# OfficeServ

## ■ How to Save Logs



- Set the Trace Level
- Run the DBGView.EXE
- Set the Timing Format Option as Clock-Time Mode
- Gather Logs
- Save Logs using “Save As” Option



⋮⋮⋮ **Thank you** ⋮⋮⋮